



*High Security Interchangeable Core  
for the cost of conventional locksets*

**Product Catalog**  
[www.BiLock.com](http://www.BiLock.com)

LL9001f  
Toll Free 888-564-4656

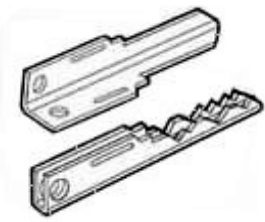
Bilock North America, Inc  
53 Railroad Avenue  
Southington, CT 06489

BiLock cylinders are available in two configurations: EX and QC.

The EX version has up to 13 pins and is specifically designed for high frequency doors or environments where extreme physical attack is likely.

The QC version is also 13 pin and can interkey with the EX series but includes a removable core feature for easy rekeying of cylinders without lock removal.

The current key design is patented and named New Generation (NG). The previous key design is named First Generation (FG).



Essential to the BiLock system is the unique dual-bladed, "U" shaped key. Each side of the key is cut differently and engages its own set of pin tumblers and side bars. The key blank is originally uncut in a 90° form. There are no key blanks of this type available anywhere else in the world. The uncut blank can only be cut and formed with proprietary equipment at the factory or at an authorized BiLock Service Center. The blank is cut to code on both sides and then formed into the "U" shape: a patented process. The colored key head (21 different colors) is then inserted and crimped securely into place.

All BiLock products carry a one year limited warranty from manufacturing defects unless otherwise identified.

## Cut Keys

Choose your key head colors from the separate Key Design Chart (page 9)



Part Number	Description	Configuration	Std Pkg
KS102	Assembled Operating Key, NG or FG, 12 Pin, 102 kwy	EX or QC	1
KN102	Assembled Control Key, NG or FG, 12 Pin, 102 kwy	QC	1
KS102-S	Assembled Operating Key, NG, 8 Pin, 102 kwy	EX or QC	1
KN102-S	Assembled Control Key, NG or FG, 8 Pin, 102 kwy	QC	1

## Quick Change Cores



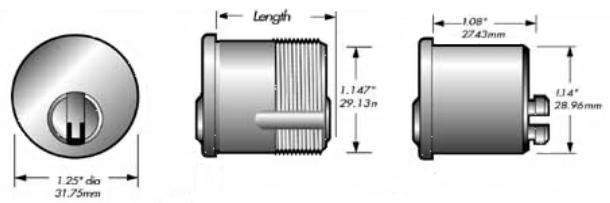
Part Number	Description	Configuration/Finish	Std Pkg
PL2301	Quick Change Core Assembly, NG, 12 Pin, 102kwy	QC, 3-26D	1
PL2201	Quick Change Core Assembly, FG, 12 Pin, 102kwy	QC, 3-26D	1
PL3326	Quick Change Core Assembly, NG, 8 Pin, 102kwy	QC, 3-26D	1

# Mortise & Rim Cylinders

Lengths with Cam: 5359 = .94/23.9mm, 5361 = 1.24/31.8mm,  
 5360 = 1.35/34.3mm, 5362 = 1.63/41.5mm,  
 5363 = 2.00/50.8mm

Mortise Cams (AR, Std, Sch L, Sargent/Yale, Clover)

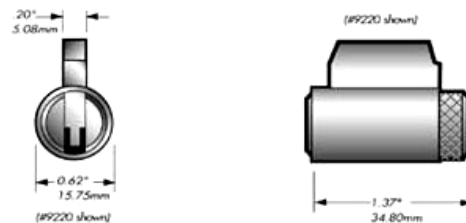
Rim Cylinder includes standard tailpiece kit



Part Number	Description	Configuration/Finish	Std Pkg
5359	Mortise 15/16", NG AR cam 8 Pin Only	QC, 3-26D-10B	1
5361	Mortise 1 1/8", NG or FG AR Cam	EX or QC, 3-26D-10B	1
5360	Mortise 1 1/4", NG or FG Std Cam	EX or QC, 3-26D-10B	1
5362	Mortise 1 1/2", NG Std Cam	QC, 26D-10B	1
5363	Mortise 2", NG Std Cam	QC, 26D	1
2301	Rim, NG or FG	EX or QC, 3-26D-10B	1

# Knob Cylinders

Tailpieces not included unless listed



Part Number	Description	Configuration/Finish	Std Pkg
9308	KIK Sargent, NG or FG	EX or QC, 4-26D	1
9310	KIK Arrow Heavy Duty, NG or FG	EX or QC, 4-26D	1
9312	KIK Yale, NG or FG	EX or QC, 4-26D	1
9320	KIK Schlage Fixed Short tailpiece, NG or FG	EX or QC, 4-26D	1
9322	KIK Schlage Floating TP B160 Series (long tailpiece standard, short available), NG or FG	EX or QC, 4-26D	1
9324	KIK Schlage A, B660 and B360 Series, NG or FG	EX or QC, 4-26D	1
9326	KIK Schlage B560 Float w/tailpiece, NG or FG	EX or QC, 4-26D	1
9327	KIK Inside cylinder for Double deadbolt with shutter, NG or FG	EX or QC, 4-26D	1
9329	KIK Marks Knob/Lever w/tailpiece, NG or FG	EX or QC, 4-26D	1
0286	KIK Corbin Unit Lock, NG	QC, 4-26D	1

# Deadbolts & Padlocks

4301/2 Deadbolts are Grade 2 with adjustable backset  
 4311/2 Deadbolts are Grade 1 with 2 3/8" or 2 3/4" BS  
 Single Deadbolts are UL rated  
 Padlock Bodies are 2" x 15/16" x 2 3/16" and KR or NKR  
 Locks include 2 keys  
 Finish 3-P is a PVD Bright Brass Finish over Stainless



Part Number	Description	Configuration/Finish	Std Pkg
4301	Single Cylinder Deadbolt x Turn Knob, NG or FG	EX or QC, 3-26D-10B-US5	1
4302	Double Cylinder Deadbolt, NG or FG	EX or QC, 3-26D-10B-US5	1
4311	Mortise Cylinder Deadbolt x Turn Knob, NG (Lori)	EX or QC, 3PV-26D-10B	1
4311AD	Mortise Cylinder Deadbolt x Turn Knob, NG Anti Drill (Lori)	EX or QC, 3PV-26D-10B	1
4312	Double Mortise Cylinder Deadbolt, NG (Lori)	EX or QC, 3PV-26D-10B	1
4361	Brass Padlock with 1"x 3/8" Steel Shackle, NG or FG	EX, or QC, 3	1
4362	Brass Padlock with 2"x 3/8" Steel Shackle, NG or FG	EX, or QC, 3	1
4363	Brass Padlock with 3"x 3/8" Steel Shackle, NG or FG	EX, or QC, 3	1
6320	Master Pro Lock Cylinder only, NG or FG	EX, or QC, 26D	1

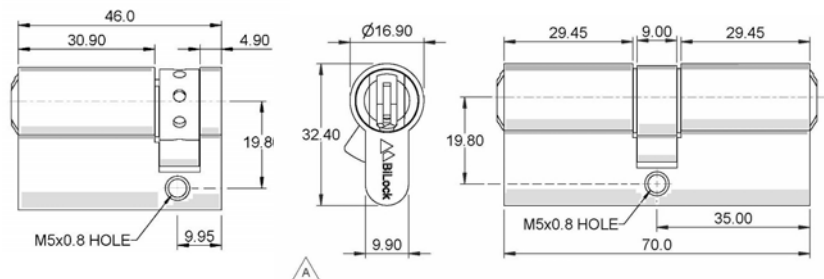
# Schlage Removable Core Format



Part Number	Description	Configuration/Finish	Std Pkg
6395	Schlage Removable Core Format	QC, US3, 26D	1

# Euro Profile Cylinders

Thumb turn is 29.45 outside x 51.2 inside



Part Number	Description	Configuration/Finish	Std Pkg
5311	Euro Profile Cylinder – Single, NG	QC, 3-26	1
5312	Euro Profile Cyl – Double, NG	QC, 3-26	1
5313	Euro Profile Cylinder - Thumb turn, NG	QC, 3-26	1

## Grade 2 Knob Locksets

Available Backsets are 2 3/8" and a 2 3/4"  
 UL/cUL Listed, ANSI Grade 2  
 ASA Strike, Stainless Latch  
 Locks include 2 keys



Part Number	Description	Configuration/Finish	Std Pkg
4341	Entry Grade 2 Knob Lockset	EX or QC, 3-32D-10B-US5	1

## Grade 1 Lever Locksets

Available Backsets are 2 3/8" and 2 3/4"  
 Anti-vandalism clutching outside handle  
 UL/cUL Listed, ANSI Grade 1, ASA Strike, Stainless Latch  
 Five Year Warranty  
 Locks include 2 keys



Part Number	Description	Configuration/Finish	Std Pkg
4321SC	Entry Grade 1 Lever Set with 6 pin SC keyway	SC, 3-26D-10B	6
4321	Entry Grade 1 Lever Set, BiLock NG	EX or QC, 3-26D-10B	1

## Grade 2 Lever Locksets

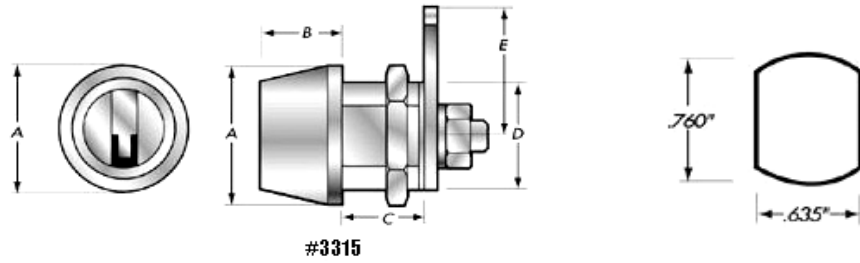
Available Backsets are 2 3/8" and 2 3/4"  
 Anti-vandalism clutching outside handle  
 UL/cUL Listed, ANSI Grade 2, ASA Strike, Stainless Latch  
 Five Year Warranty  
 Locks include 2 keys



Part Number	Description	Configuration/Finish	Std Pkg
4331SC	Entry Grade 2 Lever Set with 6 pin SC keyway	SC, 3-26D-10B	6
4331	Entry Grade 2 Lever Set, BiLock NG	EX or QC, 3-26D-10B	1
4332	Store Room Grade 2 Lever Set, BiLock NG	EX or QC, 3-26D-10B	1
4333	Classroom Grade 2 Lever Set, BiLock NG	EX or QC, 3-26D-10B	1
4334	Privacy Grade 2 Lever Set	US3-26D-10B	1
4335	Passage Grade 2 Lever Set	US 3-26D-10B	1
4336	Half Dummy Grade 2 Lever Set	US3-26D-10B	1

# Cam Locks

Cams not included



Model #	in/mm	A	B	C	D	E
3315 12 Pin 5/8"	in	0.96	0.66	0.69	0.75	Contact BiLock with your Cam needs  <i>Ask about our innovative automatic closing Slam Cam</i>
	mm	24.50	16.75	17.50	18.90	
3319 and 3218 12 Pin 1 1/8"	in	0.89	0.20	1.12	0.75	
	mm	22.50	5.00	29.60	18.90	
3327 8 Pin 5/8"	in	0.89	0.20	0.69	0.75	
	mm	22.50	5.00	17.50	18.90	
3325 8 Pin 7/8"	in	0.89	0.20	0.84	0.75	
	mm	22.50	5.00	21.34	18.90	
3389 8 Pin 1 1/8"	in	0.89	0.20	1.12	0.75	
	mm	22.50	5.00	29.60	18.90	

Part Number	Description	Configuration/Finish	Std Pkg
3327	Cam Lock 5/8", NG, 8 Pin	EX or QC, 26	1
3325	Cam Lock 7/8", NG, 8 Pin	EX, or QC, 26	1
3325AD	Cam Lock 7/8", NG, 8 Pin, Anti Drill	EX, 26	1
3389	Cam Lock 1 1/8", NG, 8 Pin	EX or QC, 26	1
3315	Cam Lock 5/8", NG or FG, 12 Pin	EX or QC, 26	1
3319	Cam Lock 1 1/8", NG or FG, 12 Pin	QC, 26	1
3218	Cam Lock 1 1/8", FG, 12 Pin	EX, 26	1

## Stocked Cams:

Straight Double Punch (E, above in inches): ES.750, ES1.0, ES1.125, ES1.375, ES1.5, ES2.0  
 Offset by 1/8": EOA1.0, EOA1.125    Offset by 1/4": EOB1.125, EOB1.5, EOB2.0  
 Offset by 3/8": EOC1.125, EOC2.0    Offset by 9/16": EOD1.25

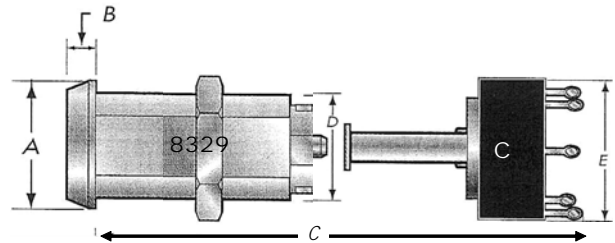
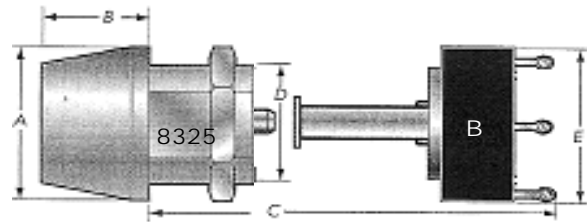
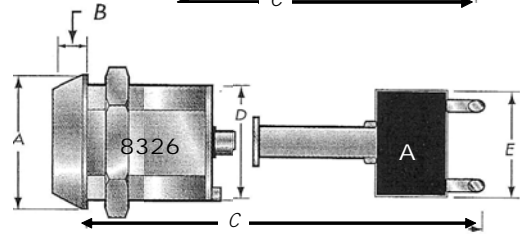
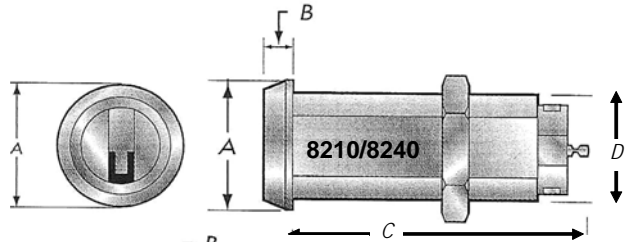
# Switch Locks

## Integrated Switch Locks

**Switch:** Honeywell Micro Switch

4 amp @ 28vdc/7 amp @ 250vac

**Product:** Solid brass body and plug - chrome plated



Dimensions		(in inches)			
Model	A	B	C	D	E
8210	0.98	0.20	2.07	0.75	-
8240	0.98	0.20	2.07	0.75	-
8326 A	0.89	0.20	1.73	0.75	0.71
8326 B	0.89	0.20	1.73	0.75	1.06
8325 C	0.89	0.20	1.73	0.75	1.06
8325 A	0.96	0.66	1.73	0.75	0.71
8325 B	0.96	0.66	1.73	0.75	1.06
8325 C	0.96	0.66	1.73	0.75	1.06
8329 A	0.89	0.20	2.24	0.75	0.71
8329 B	0.89	0.20	2.24	0.75	1.06
8329 C	0.89	0.20	2.24	0.75	1.06

## Modular Switch Locks

**Switch:** Type A 150 ma @ 250vac

Type B & C 4 amp @ 250vac

**Product:** Solid brass body and plug, chrome plated

All modular models are available

in key-retained or non key-retained function

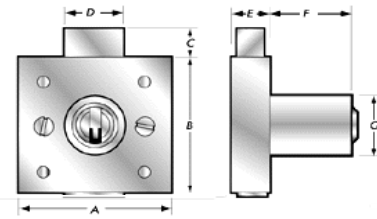
Part Number	Description	Configuration/Finish	Std Pkg
8210	Switchlock - 12 Pin - Momentary - FG Only	EX, 26	1
8240	Switchlock - 12 Pin - 1 Pole 2 Way KR -FG Only	EX, 26	1
8326-A	Switchlock - 1.75" 8 Pin - 2 Pole OFF/ON	QC, 26	1
8326-B	Switchlock - 1.75" 8 Pin - 1 Pole 4 Way	QC, 26	1
8326-C	Switchlock - 1.75" 8 Pin - 2 Pole 3 Way	QC, 26	1
8325-A	Switchlock - 1.75" 12 Pin - 2 Pole OFF/ON	QC, 26	1
8325-B	Switchlock - 1.75" 12 Pin - 1 Pole 4 Way	QC, 26	1
8325-C	Switchlock - 1.75" 12 Pin - 2 Pole 3 Way	QC, 26	1
8329-A	Switchlock - 2.25" 12 Pin - 2 Pole OFF/ON	QC, 26	1
8329-B	Switchlock - 2.25" 12 Pin - 1 Pole 4 Way	QC, 26	1
8329-C	Switchlock - 2.25" 12 Pin - 2 Pole 3 Way	QC, 26	1

# Cabinet Locks

Model No. 7352

Designed to be mounted through wooden drawers or cabinets.

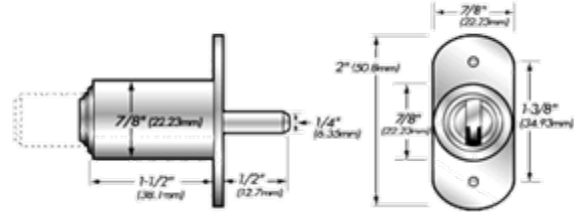
	Dim.	A	B	C	D	E	F	G
Spring Latch	in	2.06	2.06	0.37	0.79	0.48	1.13	0.86
	mm	52.40	52.40	9.50	20.05	12.20	28.80	21.80
Deadbolt	in	2.06	2.06	0.43	0.79	0.48	1.13	0.86
	mm	52.40	52.40	11.00	20.05	12.20	28.80	21.80



# Push Locks

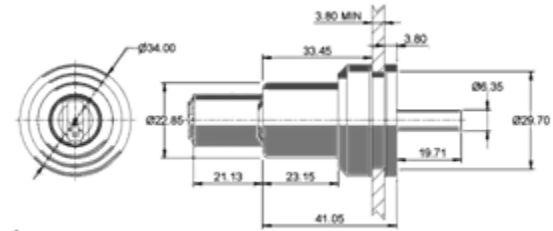
Model No. 7389

Designed to be mounted through wooden sliding showcase doors and filing cabinets.



Model No. 7388

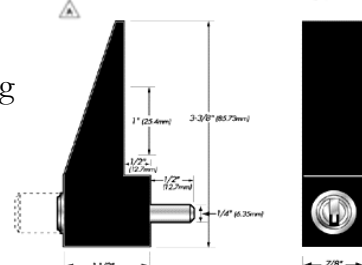
Designed to be mounted through glass sliding doors



# Showcase Locks

Model No. 7387

Design to be mounted through the bottom rail of sliding glass showcase doors.

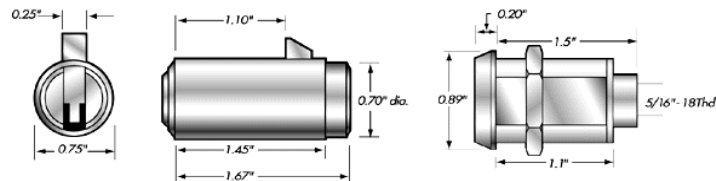


# Vending Locks

Model No's 7212 and 7210 – Plug Lock

Model No. 3249 – Threaded Extension

Pulls at 3, 6, 9, 12



Part Number	Description	Configuration/Finish	Std Pkg
7352	Cabinet Lock, NG or FG, 12 Pin	QC, 26	1
7389	Push Lock Wooden Doors, NG or FG, 12 pin	QC, 26	1
7388	Push Lock Glass Doors, NG or FG, 12 Pin	QC, 26	1
7387	Showcase Lock, NG or FG, 12 Pin	QC, Black	1
7212	Plug Lock Deadlocking, FG, 12 Pin	EX, 26	1
7210	Plug Lock Spring Latch, FG, 12 Pin	EX, 26	1
3249	Threaded Vending Lock, FG, 12 Pin	EX, 26	1



# Parts and Accessories

Part Number	Description	Std Pkg
PI 2101	Common Pin #1	200
PI 2102	Common Pin #2	200
PI 2103	Common Pin #3	200
PI 2104	Common Pin #4	200
PI 2112	Master Pin A	200
PI 2113	Master Pin B	200
PI 2114	Master Pin C	200
PI 2123	Master Pin D	200
PI 2124	Master Pin E	200
PI 2134	Master Pin F	200
PI 2141	Master Pin G	200
PI 2142	Master Pin H	200
PI 2143	Master Pin I	200

Part Number	Description	Std Pkg
PI 2144	Master Pin J	200
PI 2145	Master Pin K	200
SP 1201	Pin Springs	2500
CA 2401	Spring Retainer FG, 12 Pin	200
CA 2301	Spring Retainer NG, 12 Pin	200
CA 2401S	Spring Retainer FG, 8 Pin	200
CA 2301S	Spring Retainer NG, 8 Pin	200
SK	Sample Kit	1
IN 102	Face Insert, NG, 102 kwy, US3-26-26D	100
Key Blanks	Contact BiLock	50



Color	Position
Neon Pink	01
Neon Yellow	02
Neon Green	03
Kelly Green	04
Heritage Green	05
Redwood	06
Lilac	07
Bone	08
Silver	09
Desert Gold	10
Black	11
Blue Weave	12
Light Blue	13
Marine Blue	14
Reflex Blue	15
Mustard	16
Orange	17
Red	18
Pink	19
Purple	20
White	21